



KODAK Proofing Software

A SIMPLE PATH TO CONSISTENT COLOR

What's New

- Now supporting violet ink
- Broad connectivity to new proofers including Epson SC-P7000 and SC-P9000
- Now supporting certified proofing workflow ISO12647

Kodak's Technology Inside

KODAK Proofing Software is at the core of Kodak's inkjet proofing solution. This open RIP software application provides all the tools you need to achieve accurate and predictable color proofs from today's leading inkjet printers.

Better Management of Colors

More and more spot colors are used in packaging today. KODAK APPROVAL Color Manager makes defining color characteristics simple, regardless of variations in printing methods, inks, substrates and screening.

Features

- Save time and achieve color and RIP integrity by connecting proofing seamlessly to KODAK PRINERGY Workflow Systems
- Industry leading color performance in one shot when paired with KODAK COLORFLOW Pro Software
- Certified proofing for color confirmation allows you to check the color and report key parameters on every proof
- Scheduled calibration allow you to color calibrate your proofer during off hours
- Meet print buyer expectations by achieving and maintaining proofs to industry standards such as GRACoL, SWOP, and FOGRA

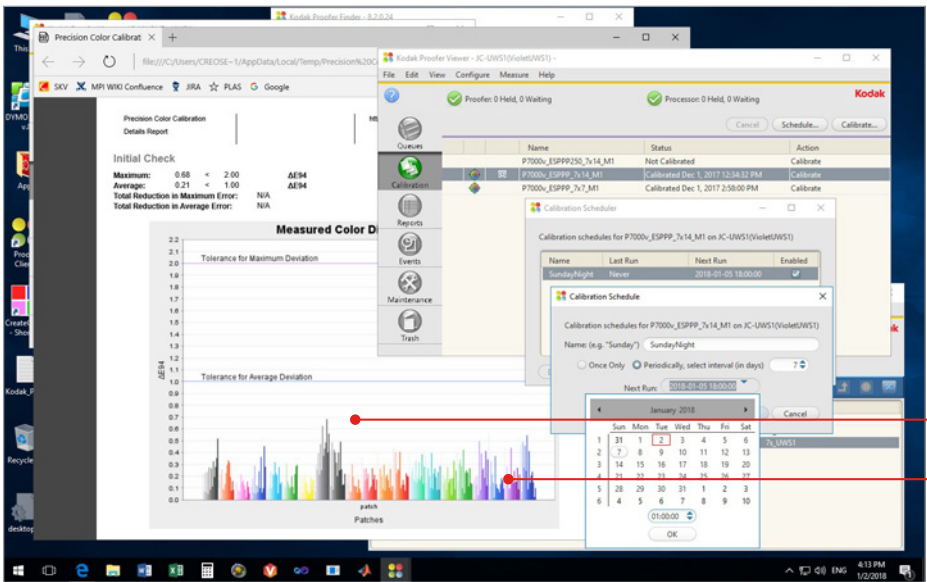


Certified Proofing for Color Confirmation showing FOGRA51 ISO12647 conformance



KODAK PROOFING SOFTWARE HIGHLIGHTS

Scheduled Calibration

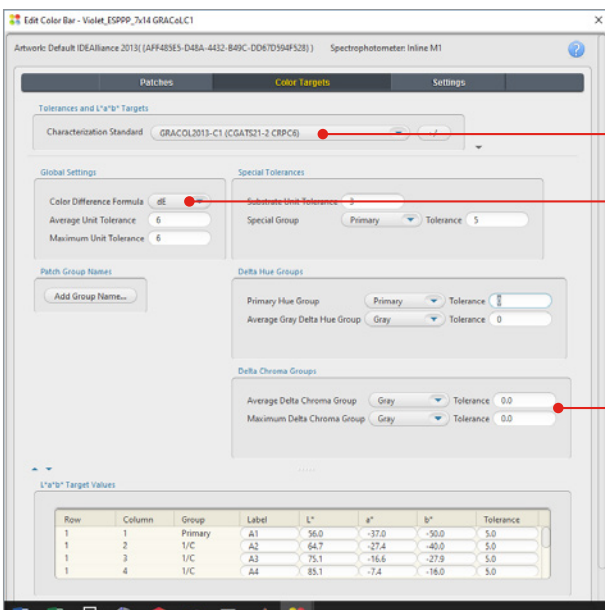


Color Calibration Details Report

Now supporting violet ink calibration

Schedule and calibrate your violet proofers during off hours.

Color Bar Editing Dialog



New CRPC and FOGRA standards available

Now available dE00

New parameters for ISO12647

Used to customize color checking parameters on proofs.



Technical Specifications

Supported inkjet printers	Description
Desktop inkjet	<ul style="list-style-type: none"> Epson Stylus Pro 4000, 4800, 4880, 4880C, 4900 and 4910 Printers Epson PX-6000, PX-6500 and PX-6550 Printers
4-up / 20 - 24" inkjet	<ul style="list-style-type: none"> Epson SureColor P6000, P6050, P6070, P6080, P7000, P7050, P7070, P7080 (Commercial and Standard Editions – with and without violet ink) Epson Stylus Pro 7600, 7700, 7710, 7800, 7880, 7880C, 7890, 7900, 7908, 7910, WT7900 and WT7910 Printers Epson PX-7000, PX-W8000 and PX-F8000 Printers HP Designjet Z2100 24in Photo Printer
8-up / 42 - 44" inkjet	<ul style="list-style-type: none"> Epson SureColor P8000, P8050, P8070, P8080, P9000, P9050, P9070, P9080 (Commercial and Standard Editions – with and without violet ink) Epson Stylus Pro 9600, 9700, 9710, 9800, 9880, 9880C, 9890, 9900, 9908, 9910 and 10600 Printers Epson PX-H8000 Printers HP Designjet Z2100 44in Photo Printer
Supported APPROVAL Systems	<ul style="list-style-type: none"> 2-up: KODAK Approval NX or XP Digital Color Imaging Systems 4-up: KODAK Approval NX or XP Digital Color Imaging Systems

Additional Technical Information

Feature	Description
Supported operating systems – Server	<ul style="list-style-type: none"> KODAK Proofing Software for Inkjet <ul style="list-style-type: none"> Windows 10 Pro, Windows 7 SP1 KODAK Approval Digital Color Imaging System <ul style="list-style-type: none"> Resides on KODAK Approval Host Workstation (Dell Precision Workstations 650, 670, 690, T5400 or T7500) Requires Kodak Approval Host Workstation Software version 2.2.7 for Approval NX or XP Systems; version 1.8.1 for Approval XP Systems
Supported operating systems – Client	<ul style="list-style-type: none"> KPS 8: Windows: 10 Pro, 8 or 8.1 Pro, 7 Pro SP1, Server 2008 R1 or R2, Macintosh Operating Systems: 10.8, 10.9, 10.10, 10.11, 10.12 KPS 6: Windows 7, Windows 2000 (SP4), Windows XP (SP3); Macintosh Operating Systems: 10.6 (with Java 1.6 or later), 10.7 or 10.8 KPS 5: Windows 7, Windows 2000 (SP4), Windows XP (SP3); Macintosh Operating Systems 10.5 and 10.6
Base connectivity	<ul style="list-style-type: none"> Direct network connection to KODAK PRINERGY Workflow Systems
Supported file formats from third-party workflows	<ul style="list-style-type: none"> PDF 1.2, 1.3, 1.4, and 1.5 (separated or composite), PDF/X-1a, PDF/X-3 PostScript Level 1 or 2, and PostScript 3 (separated or composite) EPS (Encapsulated PostScript) DCS and DCS-2 (both single- and multi-file versions) JPEG TIFF Support: TIFF/IT-P1 and CT/LW; multi file 1-bit TIFF; single file CMYK 8-bit and 16-bit TIFF; single file RGB 8-bit and 16-bit TIFF; compression types

